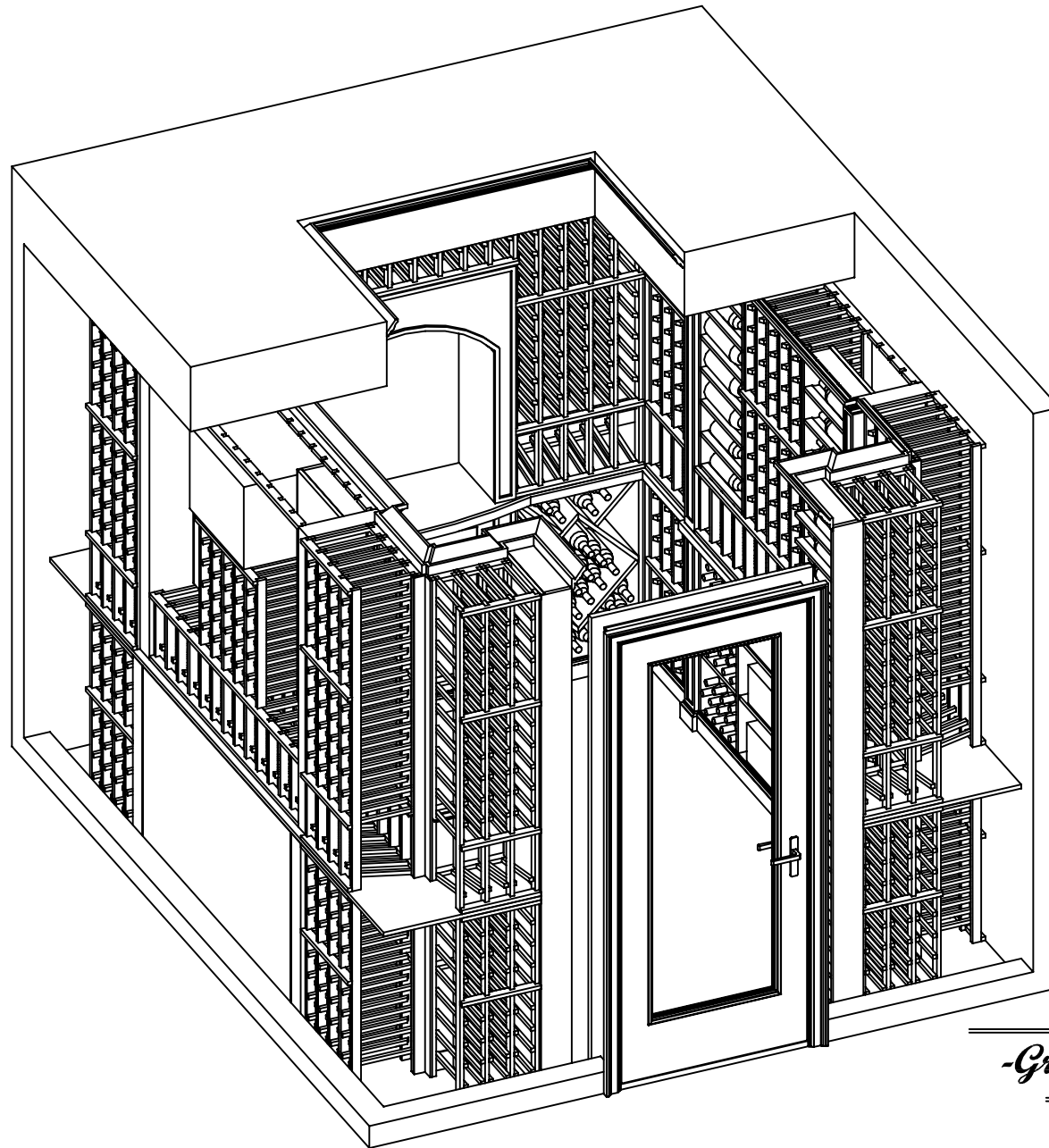


Bottle count:
1058



-Grand Cru Series-

Project:

Drawn by: *GL*

Rosehill
WINE CELLARS

339 Olivewood Road
Toronto, On M8Z 2Z6
416-285-6604

www.rosehillwinecellars.com

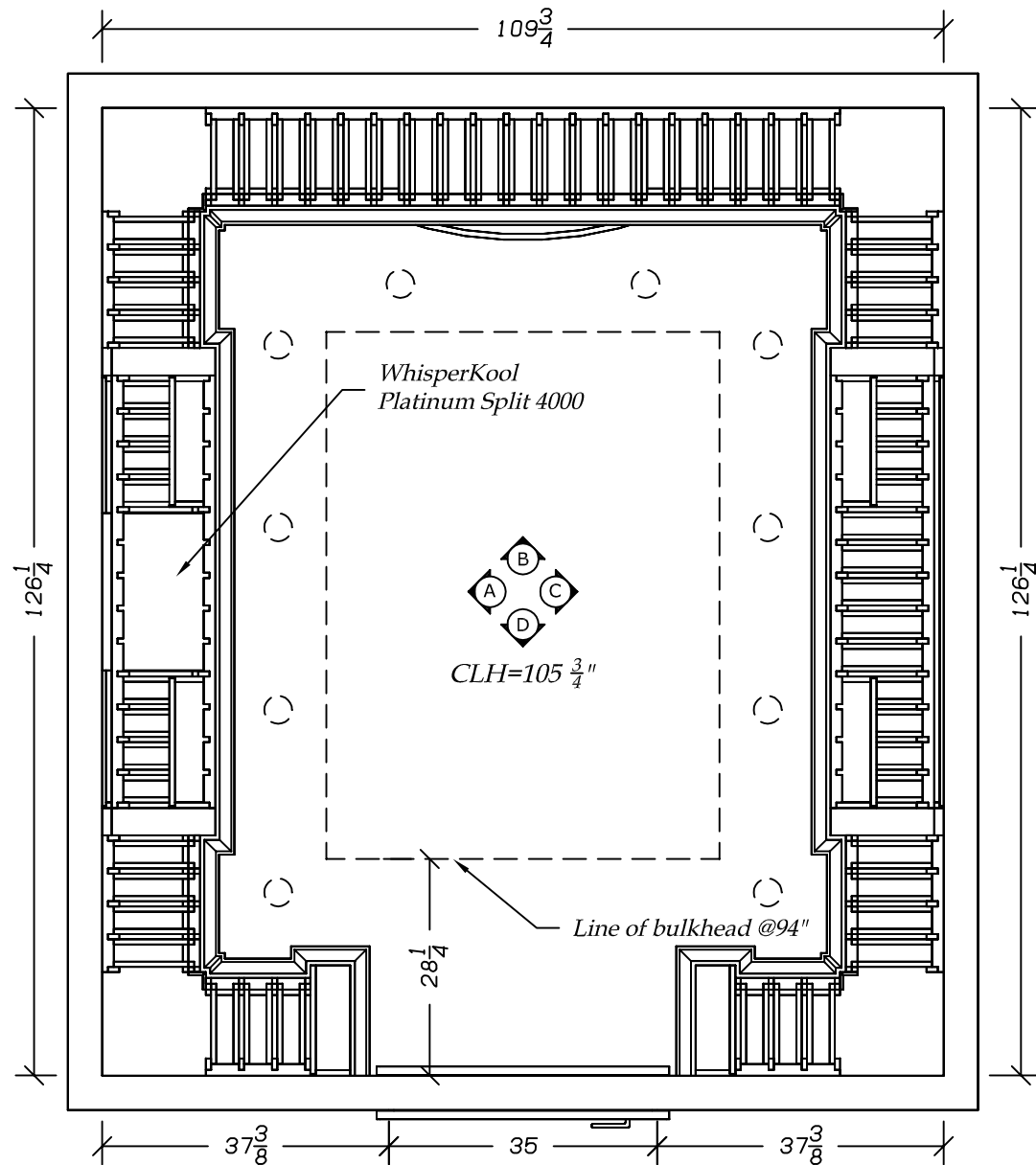
Overall View

1 - 6

Revision #: *1*

Units: *Inch*

DESIGN PLANS ARE PROVIDED FOR THE FAIR USE BY THE CLIENT OR HIS AGENT IN COMPLETING THE PROJECT AS LISTED WITHIN THIS CONTRACT. DESIGN PLANS REMAIN PROPERTY OF THIS COMPANY AND CANNOT BE USED OR REUSED WITHOUT PERMISSION. ALL DIMENSIONS AND SIZE DESIGNATIONS GIVEN ARE SUBJECT TO VERIFICATION ON JOB SITE AND ADJUSTMENT TO FIT JOB CONDITIONS.



Project:

Drawn by: *GL*

Rosehill
WINE CELLARS

339 Olivewood Road
Toronto, On M8Z 2Z6
416-285-6604

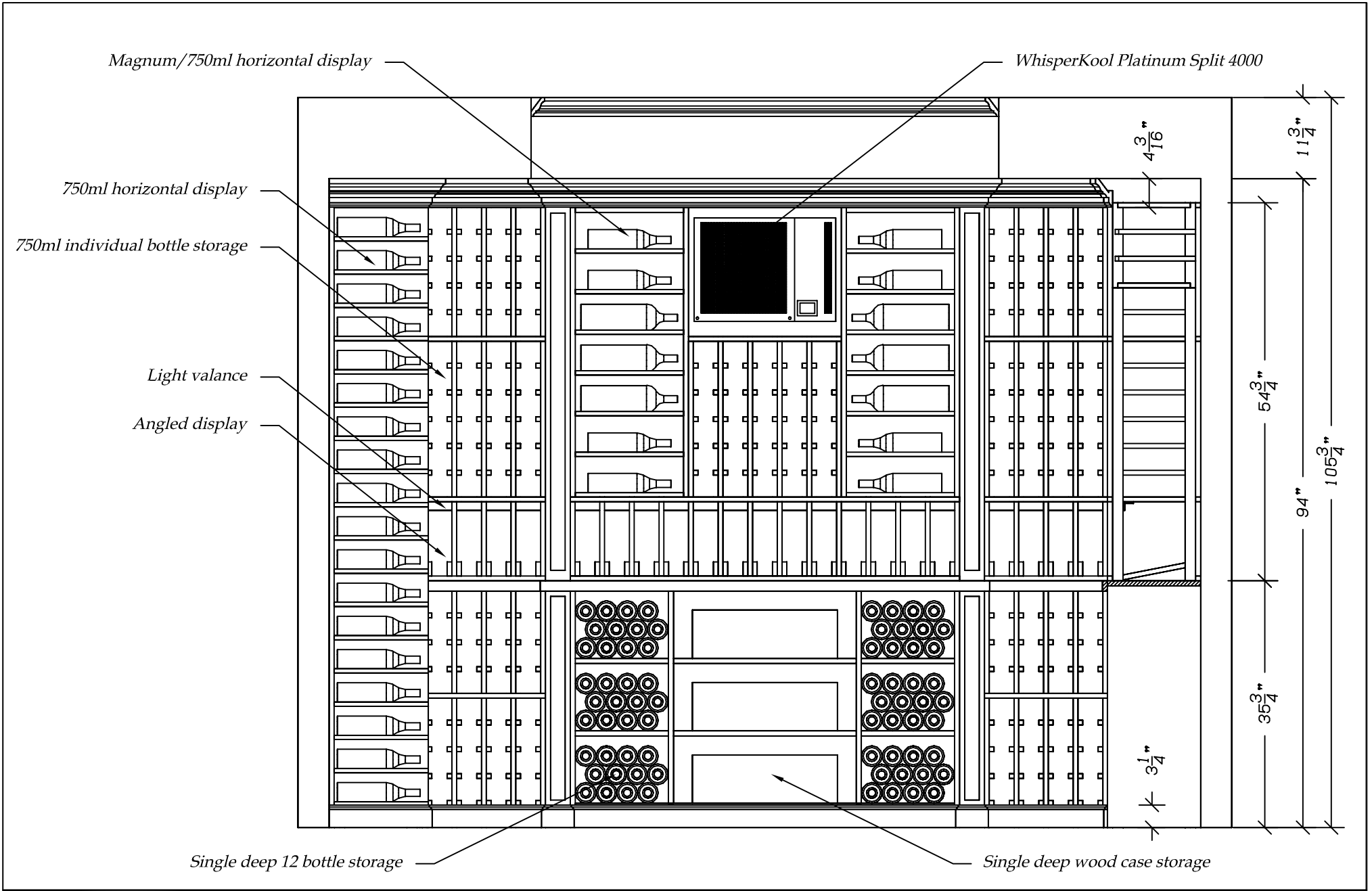
www.rosehillwinecellars.com

Revision #: *1*

Units: *Inch*

Plan View

2 - 6



Project:

Drawn by: *GL*

Rosehill
WINE CELLARS

339 Olivewood Road
Toronto, On M8Z 2Z6
416-285-6604

www.rosehillwinecellars.com

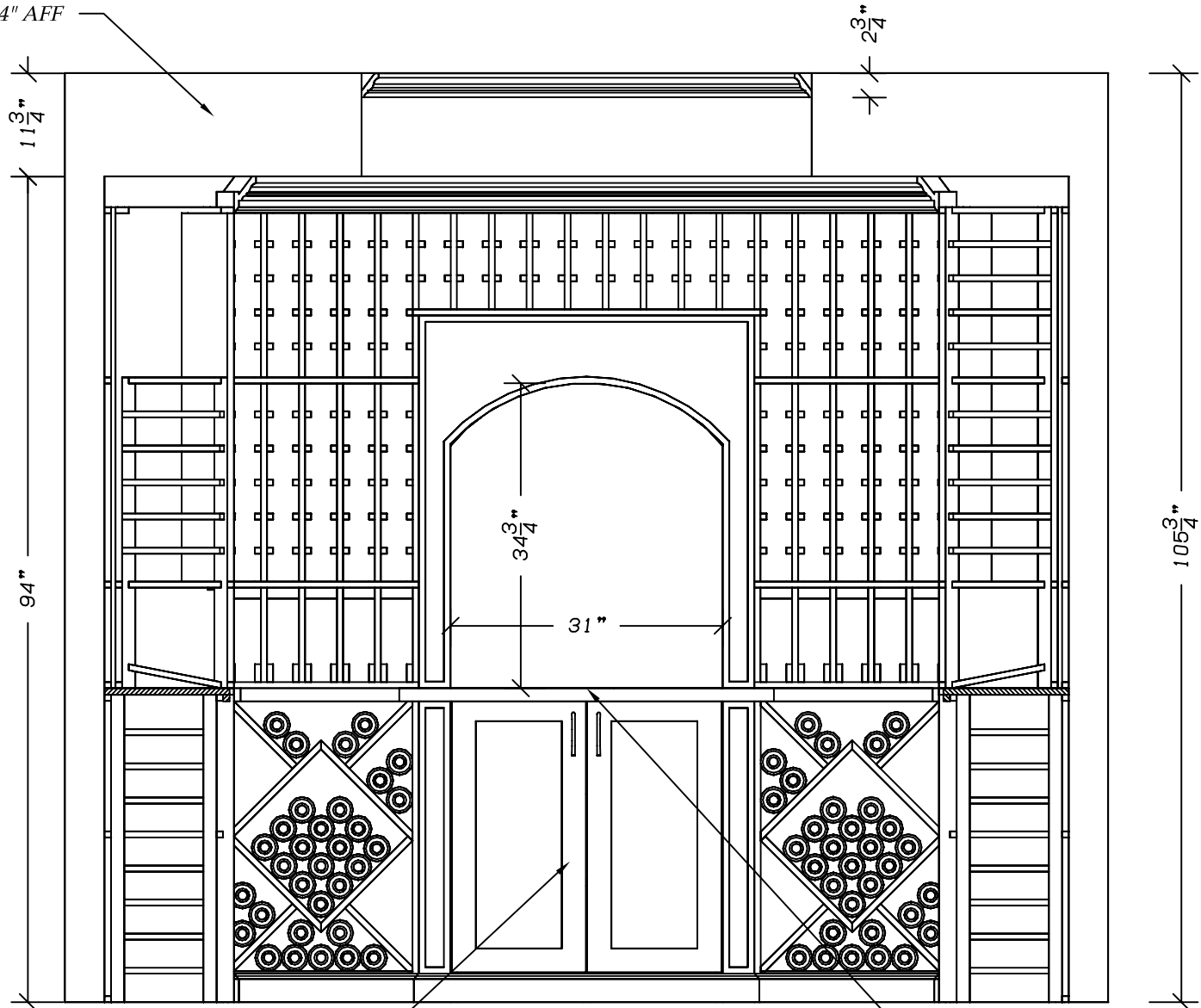
Elevation A

3 - 6

Revision #: 1

Units: *Inch*

Walnut bulkhead @94" AFF



Two door cabinet with adj. shelf

Black granite counter top

Project:

Drawn by: *GL*

Rosehill
WINE CELLARS

339 Olivewood Road
Toronto, On M8Z 2Z6
416-285-6604

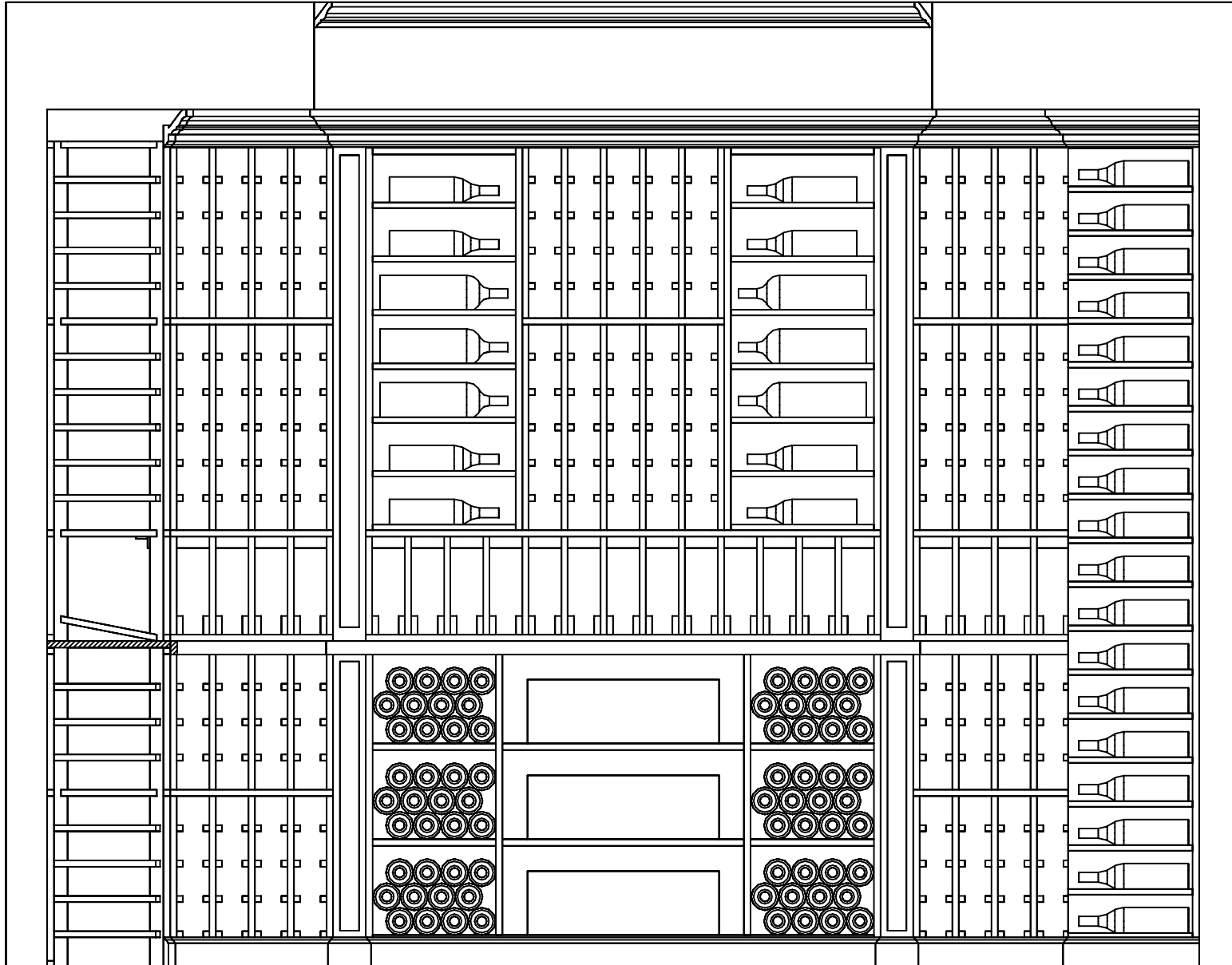
www.rosehillwinecellars.com

Elevation B

4 - 6

Revision #: 1

Units: *Inch*



Project:

Drawn by: *GL*

Rosehill
WINE CELLARS

339 Olivewood Road
Toronto, On M8Z 2Z6
416-285-6604

www.rosehillwinecellars.com

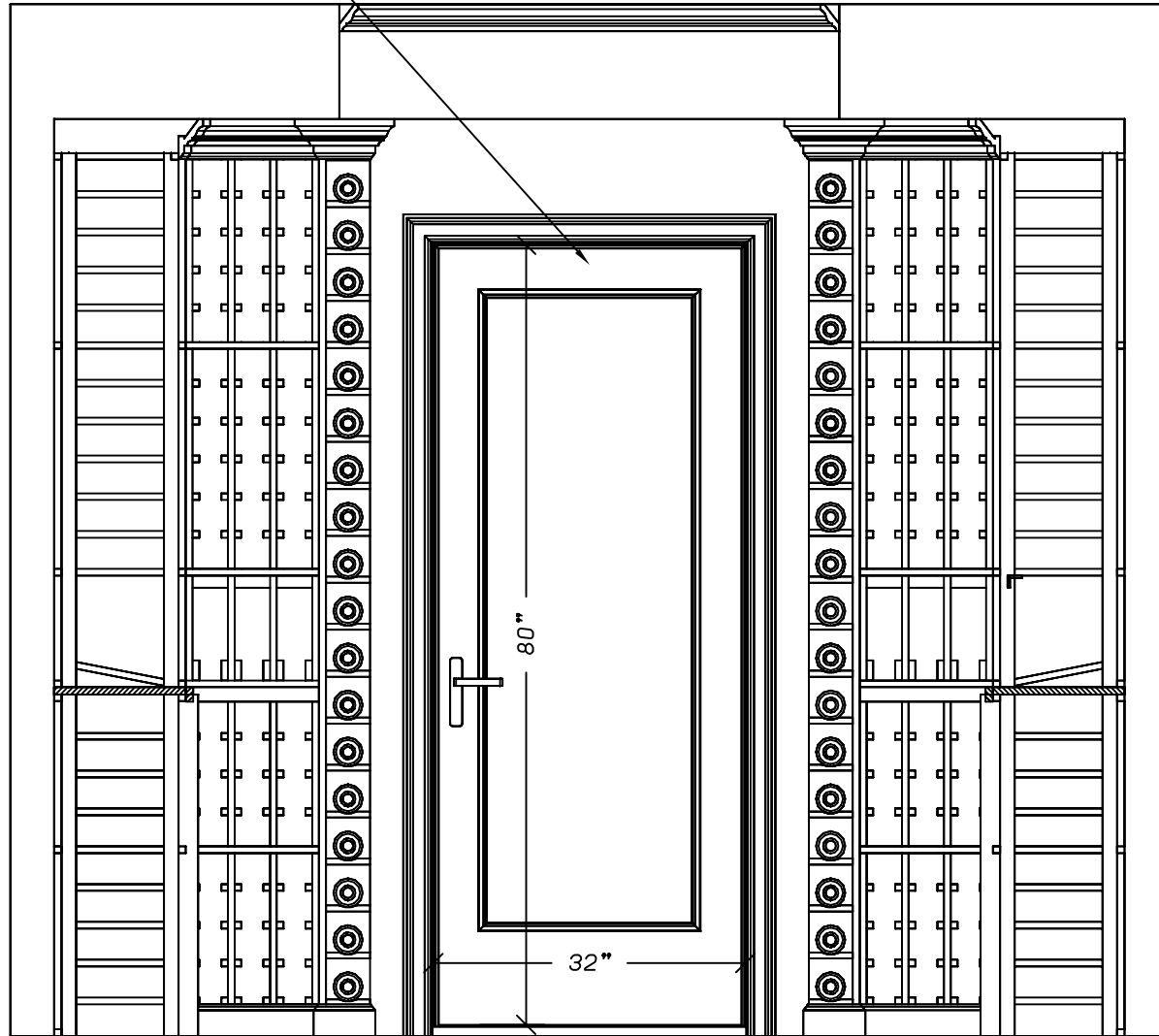
Elevation C

5 - 6

Revision #: *1*

Units: *Inch*

Single door (glass panel)



Project:

Drawn by: *GL*

Rosehill
WINE CELLARS

339 Olivewood Road
Toronto, On M8Z 2Z6
416-285-6604

www.rosehillwinecellars.com

Elevation D

6 - 6

Revision #: *1*

Units: *Inch*

DESIGN PLANS ARE PROVIDED FOR THE FAIR USE BY THE CLIENT OR HIS AGENT IN COMPLETING THE PROJECT AS LISTED WITHIN THIS CONTRACT. DESIGN PLANS REMAIN PROPERTY OF THIS COMPANY AND CANNOT BE USED OR REUSED WITHOUT PERMISSION. ALL DIMENSIONS AND SIZE DESIGNATIONS GIVEN ARE SUBJECT TO VERIFICATION ON JOB SITE AND ADJUSTMENT TO FIT JOB CONDITIONS.