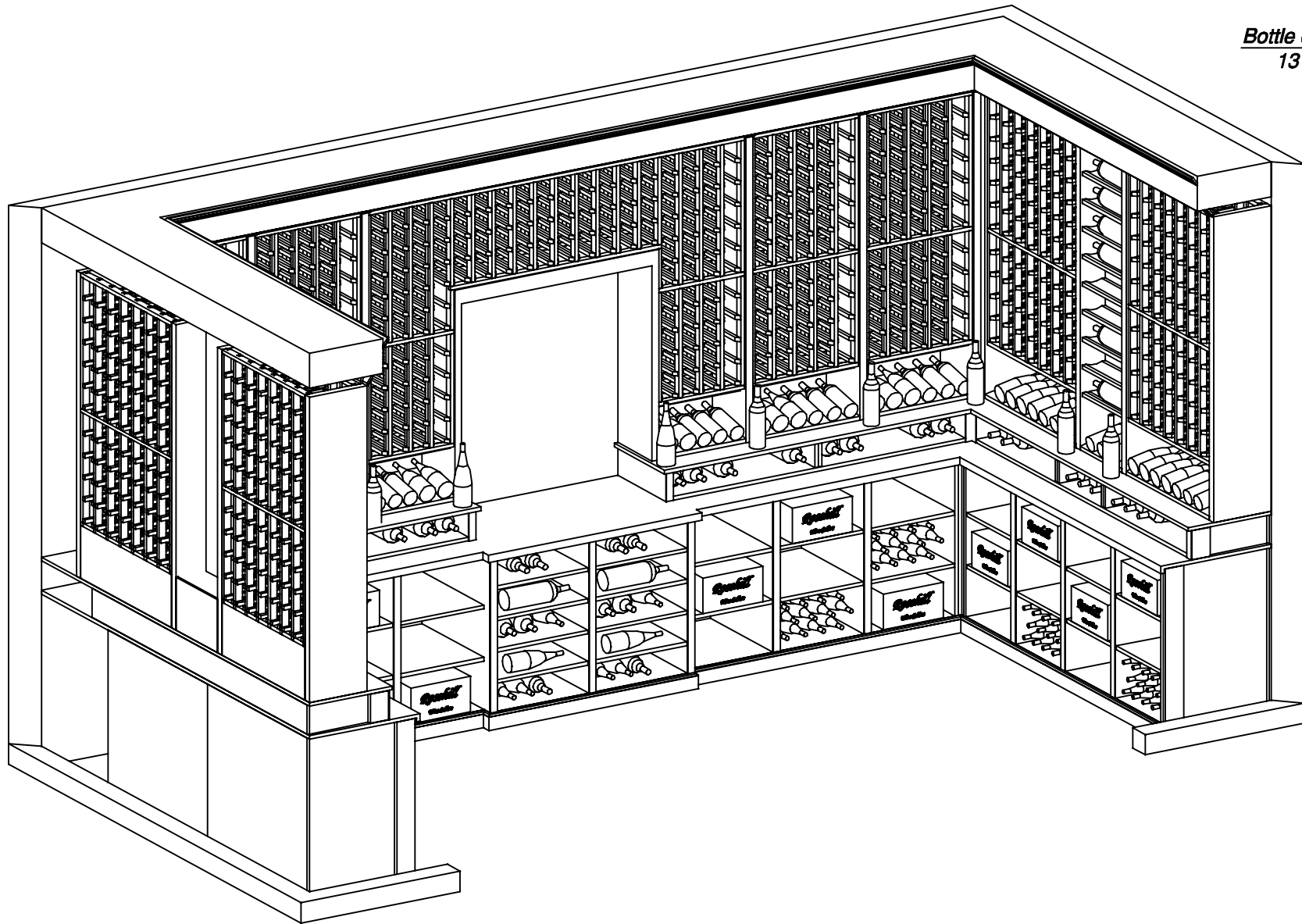


Bottle count:
1318



Project:

Drawn by: *GL*

Rosehill
WINE CELLARS

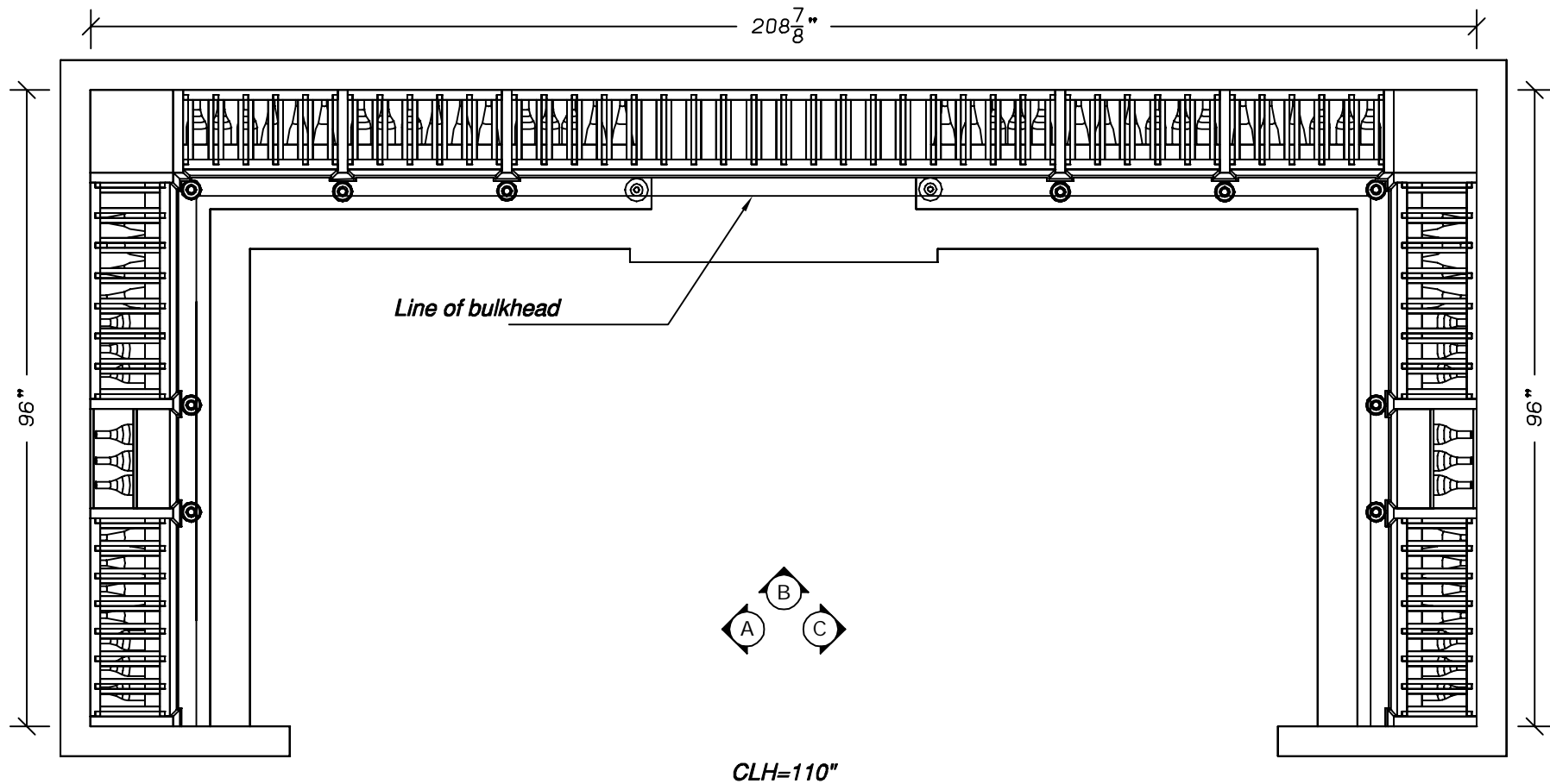
Overall view

Revision#: 0.0.0

Approved:

1 of 5

DESIGN PLANS ARE PROVIDED FOR THE FAIR USE BY THE CLIENT OR HIS AGENT IN COMPLETING THE PROJECT AS LISTED WITHIN THIS CONTRACT. DESIGN PLANS REMAIN PROPERTY OF THIS COMPANY AND CANNOT BE USED OR REUSED WITHOUT PERMISSION. ALL DIMENSIONS AND SIZE DESIGNATIONS GIVEN ARE SUBJECT TO VERIFICATION ON JOB SITE AND ADJUSTMENT TO FIT JOB CONDITIONS.



Project:

Revision#: 0.0.0

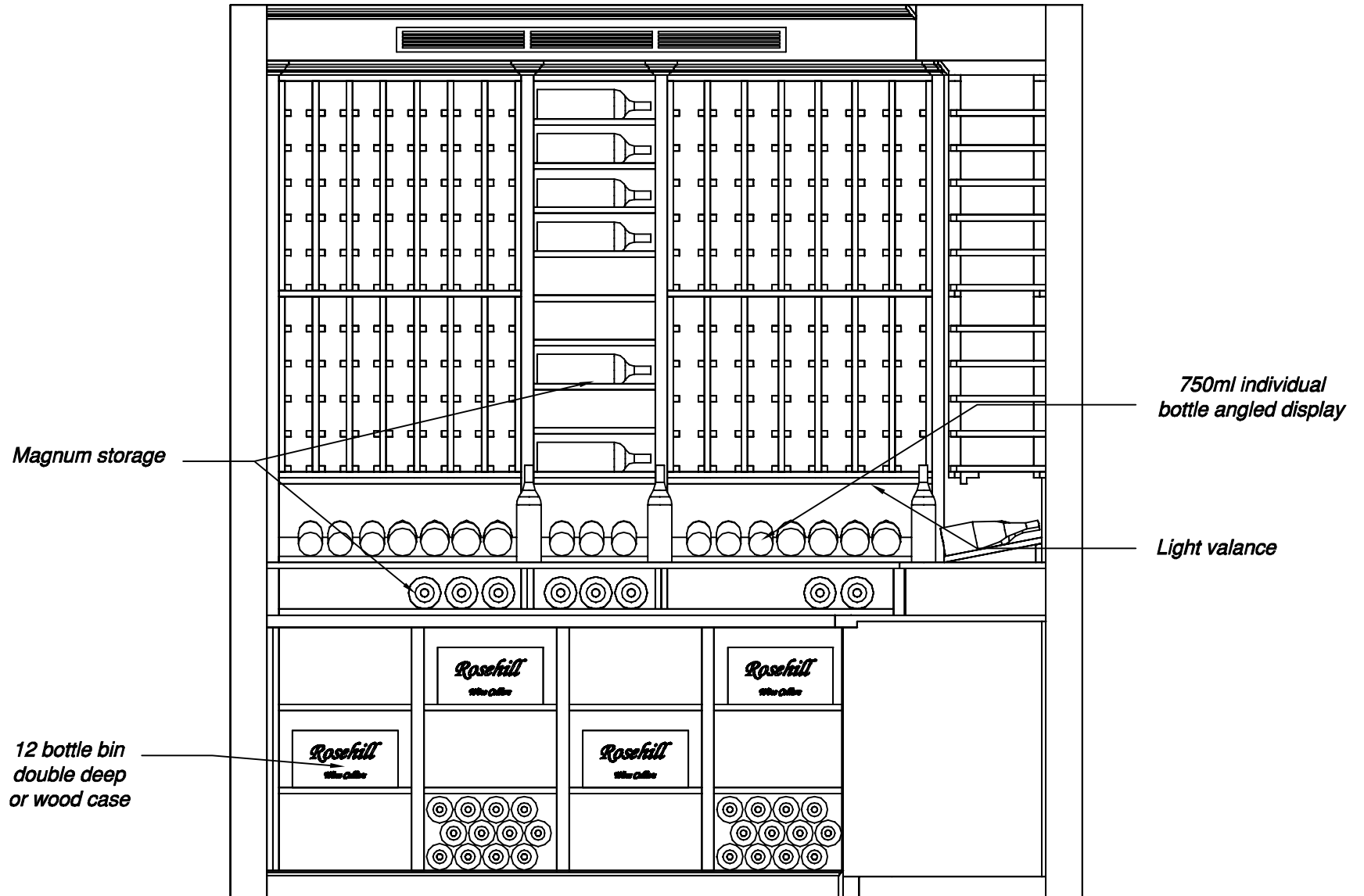
Drawn by: *GL*

Approved:

Rosehill
WINE CELLARS

Plan view

2 of 5



Project:

Revision#: 0.0.0

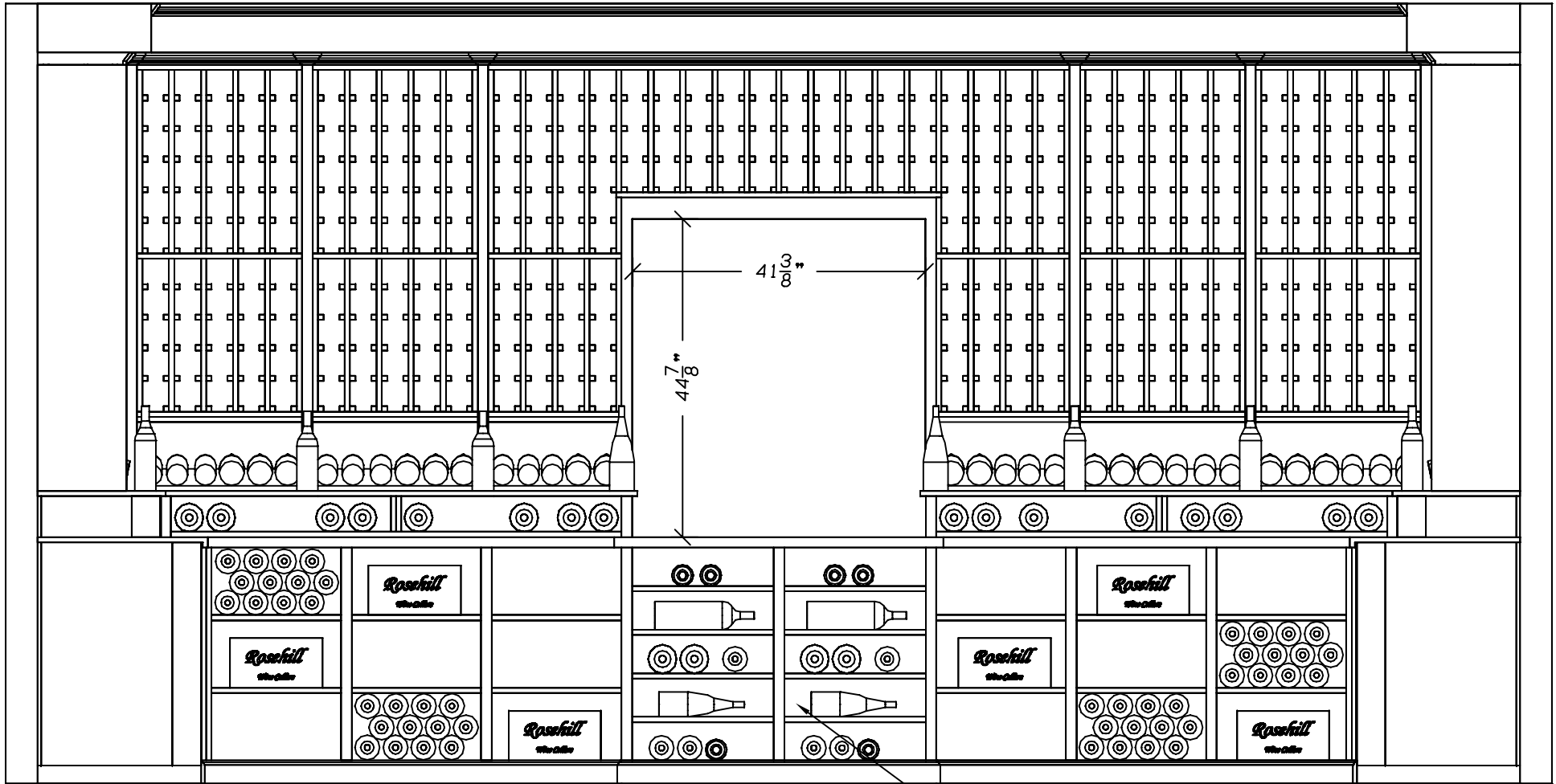
Drawn by: *GL*

Approved:



Elevation A

3 of 5



Adj. shelves
for bulk storage

Project:

Revision#: 0.0.0

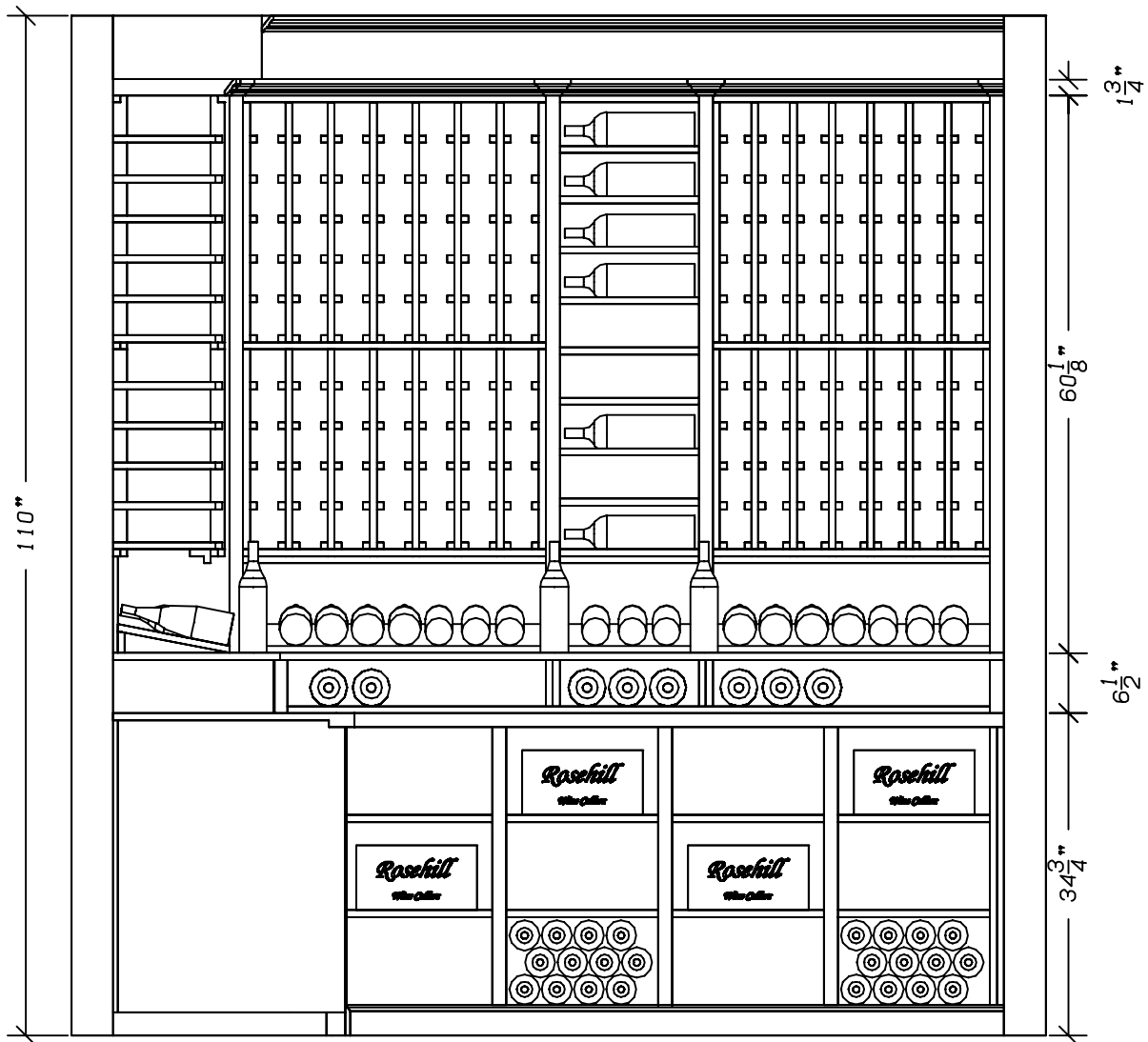
Drawn by: *GL*

Approved:

Rosehill
WINE CELLARS

Elevation B

4 of 5



Project:

Revision#: 0.0.0

Drawn by: *GL*

Approved:

Rosehill
WINE CELLARS

Elevation C

5 of 5